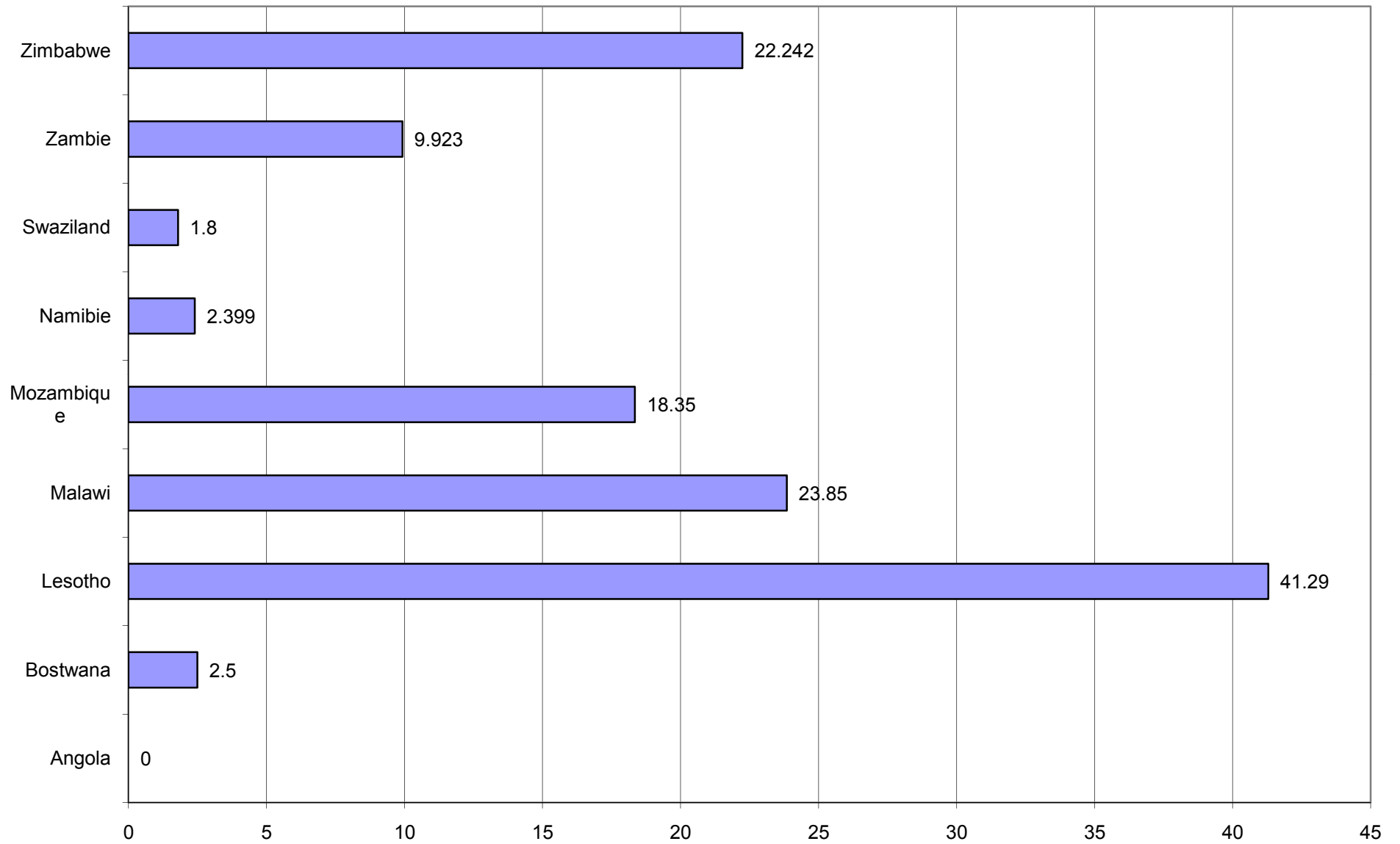
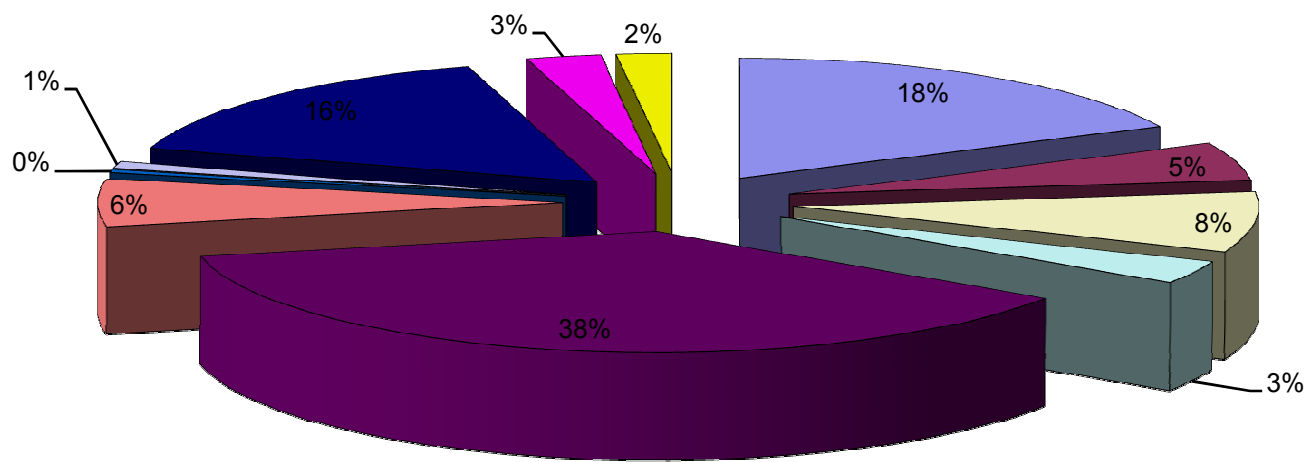


- Agriculture/dvt rural
- santé/ secteurs sociaux
- Société civile/dvt local
- JLS
- Infrastructure
- eau/assainissement
- Education/formation
- Envir
- gvce/reforme instit
- dvt économique
- Autre

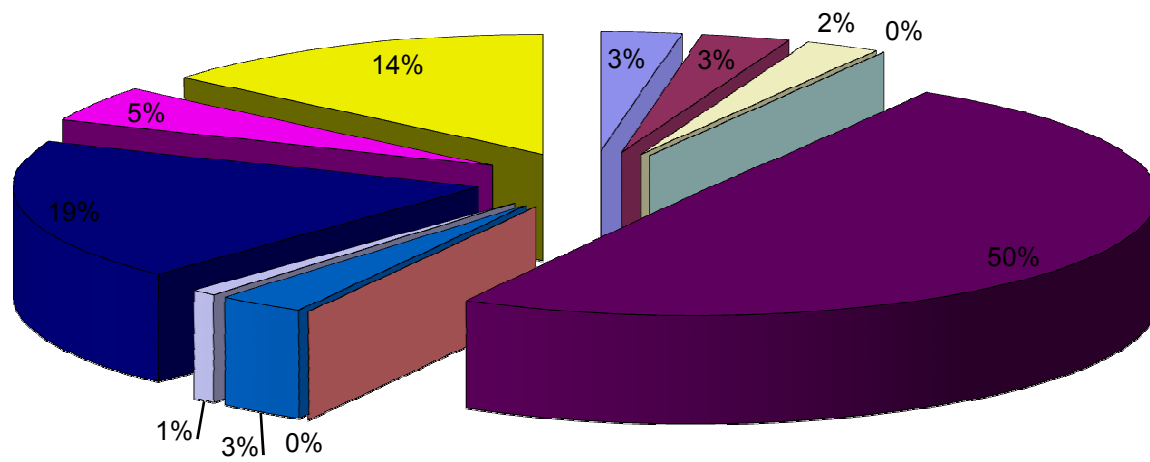




- Agriculture/dvt rural
- santé/ secteurs sociaux
- Société civile/dvt local
- JLS
- Infrastructure
- eau/assainissement
- Education/formation
- Envir
- gvce/reforme instit
- dvt économique
- Autre

	TOTAL	Agriculture/dvt	santé/ secteur	Société civile/d JLS	Infrastructure	eau/assainiss	Education/forr	Envir	gvce/reforme	ir dvt économiq	Autre	si autre, thème
<b>TOTAL</b>	<b>1153.416</b>	<b>124.629</b>	<b>70.06</b>	<b>84.382</b>	<b>36.75</b>	<b>420.354</b>	<b>82.489</b>	<b>31.103</b>	<b>8.5</b>	<b>199.144</b>	<b>40.663</b>	<b>55.342</b>
Benin	12.882		3							6.382		3.5 lutte vs traite
Burkina faso	4									4		
Cap-vert	7.624			1.309			5.1			1.215		
Côte d'Ivoire	4.31	4.31										
Gambie	4.419			2.469						1.95		
Ghana	50.6	5	2.8		3	22.81	15			1.99		
Guinée	81	4.5		2		63				11.5		
Guinée Bissau	24.64					12			3.5	9.14		
Liberia	32.4	25								7.4		
Mali	5.9									3.9		2 Sécu Alim
Mauritanie	17.7			9	4.75	2.2				1.75		
Niger	11.802	3.812					4.5	1.99		1.5		
Nigeria	93.5	45.5	20	20						8		
Senegal	66.589	1.99				48.6	7.999			4		4 mines
sierra Leone	36			6		22			1	2	5	
Togo	49.584				8	18				15.584	8	
<b>Secteur 1</b>	<b>502.95</b>	<b>90.112</b>	<b>25.8</b>	<b>40.778</b>	<b>15.75</b>	<b>188.61</b>	<b>32.599</b>	<b>1.99</b>	<b>4.5</b>	<b>80.311</b>	<b>13</b>	<b>9.5</b>
pourcentage		17.9%	5.1%	8.1%	3.1%	37.5%	6.5%	0.4%	0.9%	16.0%	2.6%	1.9%
Burundi	2.47		1.87							0.6		
Cameroun	35.677	10.377		5.4		2.5				9.4	5	3 sécurité alime
Congo B	12.22					5				2.22		5 post conflit
Gabon	6.043	1.1					4.943					
Guinée E	4.3									4.3		
RCA	8.4		5.9							2.5		
RDC	76.7				15	22	22		4	8.7		5 sécurité aérien
Rwanda	2				2							
Sao Tomé	5.446					2.846	2			0.6		
Tchad	37.979				4		20			13.979		
<b>Secteur 1</b>	<b>191.235</b>	<b>11.477</b>	<b>7.77</b>	<b>5.4</b>	<b>21</b>	<b>32.346</b>	<b>44</b>	<b>4.943</b>	<b>4</b>	<b>42.299</b>	<b>5</b>	<b>13</b>
pourcentage		6.0%	4.1%	2.8%	11.0%	16.9%	23.0%	2.6%	2.1%	22.1%	2.6%	6.8%
Angola	0											
Bostwana	2.5									2.5		
Lesotho	41.29			6.4		29.35				0.6	4.94	
Malawi	23.85			15						8.85		
Mozambique	18.35		11			1.6				5.75		
Namibie	2.399			1.604						0.795		
Swaziland	1.8										1.8	
Zambie	9.923			5						3.5	1.423	
Zimbabwe	22.242	6	10	2.5						1.9	1	0.842 migration & dé
<b>Secteur 1</b>	<b>122.354</b>	<b>6</b>	<b>21</b>	<b>30.504</b>	<b>0</b>	<b>30.95</b>	<b>0</b>	<b>0</b>	<b>0</b>	<b>23.895</b>	<b>9.163</b>	<b>0.842</b>
pourcentage		4.9%	17.2%	24.9%	0.0%	25.3%	0.0%	0.0%	0.0%	19.5%	7.5%	0.7%
Comores	2.6									2.6		

Djibouti	0											
Ethiopie	18.59		6.99							11.6		
Erythrée	48	0.8				38.75				3.45		5 post conflit-ré
Kenya	70			6		57					7	
Maurice	0.5									0.5		
Madagascar	33.2	5.6				15.3				12.3		
Ouganda	3									3		
Somalie	36							7			4	25
Soudan	7.072									5.072		2
Tanzanie	8.578					3				5.578		
<b>Secteur 1</b>	<b>227.54</b>	<b>6.4</b>	<b>6.99</b>	<b>6</b>	<b>0</b>	<b>114.05</b>	<b>0</b>	<b>7</b>	<b>0</b>	<b>44.1</b>	<b>11</b>	<b>32</b>
pourcentage		2.8%	3.1%	2.6%	0.0%	50.1%	0.0%	3.1%	0.0%	19.4%	4.8%	14.1%
Antigua & Bar	0											
Bahamas	0											
Barbade	0											
Belize	0											
dominique	5.68					2.82	2.86					
Grenade	0											
Gyuana	18.628					17.918				0.71		
Haïti	45					25.4		14		5.6		
Jamaïque	16.869	2.97	8.5				3.03			1.369	1	
République D	2.56					2.56						
St Christophe	2.6					2.6						
Sainte Lucie	4.5	4.5										
St Vincent et	6.34	3.17						3.17				
Suriname	7.16			1.7		3.1				0.86	1.5	
trinité et Toba	0											
<b>Secteur 1</b>	<b>109.337</b>	<b>10.64</b>	<b>8.5</b>	<b>1.7</b>	<b>0</b>	<b>54.398</b>	<b>5.89</b>	<b>17.17</b>	<b>0</b>	<b>8.539</b>	<b>2.5</b>	<b>0</b>
pourcentage		9.7%	7.8%	1.6%	0.0%	49.8%	5.4%	15.7%	0.0%	7.8%	2.3%	0.0%
cook Islands	0											
Fidji	2.723								2.723			
Kiribati	2.2								2.2			
Marshall	0											
Micronésie	0											
Nauru	0											
Niue	0											
Palau	0											
PNG	28.583			20			5.583				3	
Salomon	8.23							8.23				
Samoa	1.48			1.48								
Timor oriental	16.5	10								6.5		
Tonga	0											
Tuvalu	0											
Vanuatu	2										2	
<b>Secteur 1</b>	<b>61.716</b>	<b>10</b>	<b>0</b>	<b>21.48</b>	<b>0</b>	<b>0</b>	<b>5.583</b>	<b>8.23</b>	<b>4.923</b>	<b>6.5</b>	<b>5</b>	<b>0</b>
pourcentage		16.2%	0.0%	34.8%	0.0%	0.0%	9.0%	13.3%	8.0%	10.5%	8.1%	0.0%



- Agriculture/dvt rural
- santé/ secteurs sociaux
- Société civiel/dvt local
- JLS
- Infrastructure
- eau/assainissement
- Education/formation
- Envir
- gvce/reforme instit
- dvt économique
- Autre

Agriculture/dv santé/ secteuru Société civil/ JLS Infrastructure eau/assainiss Education/for

2.8%

3.10%

2.60%

0.00%

50.10%

0.00%

3.10%

|

---

Envir	gyvce/reforme	dvt économiq	Autre	<i>si autre, thème</i>
0.90%	19%	4.80%	14.10%	

---

---

---